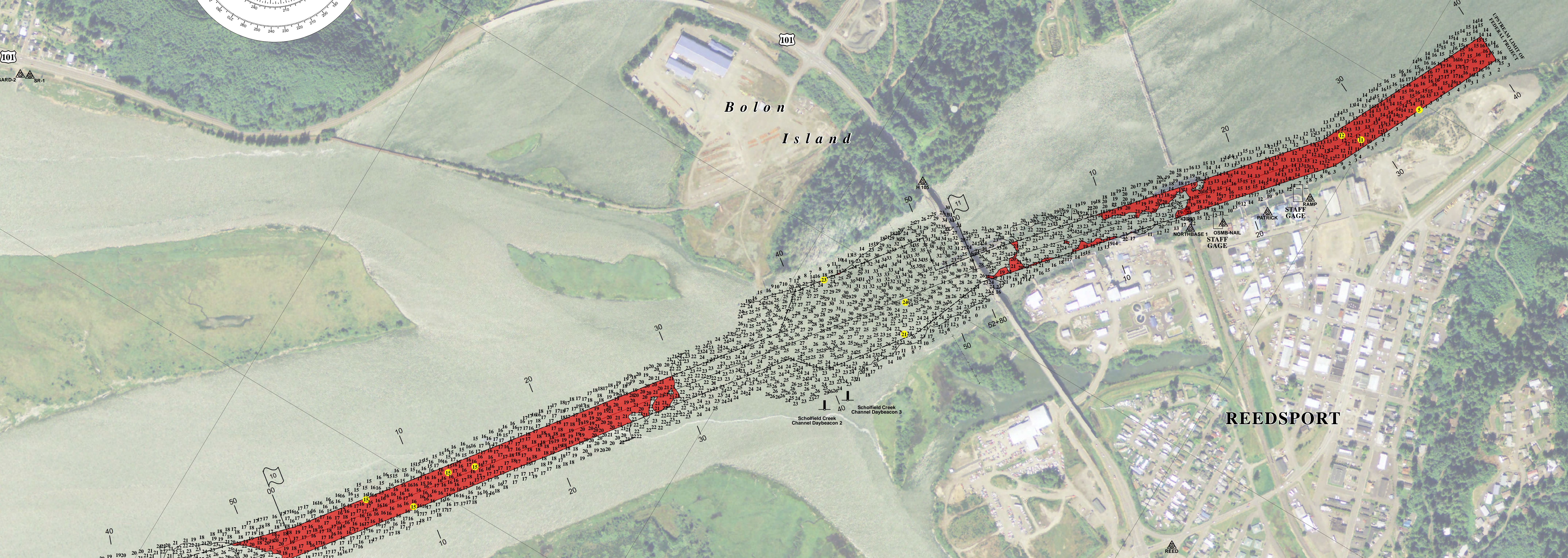


GARDINER

Bolon Island

REEDSPORT



**NOTES:**  
 Horizontal Coordinate System:  
 North American Datum of 1983 (NAD83), projected to the State Plane Coordinate System (SPCS), Oregon South Zone. Distance units in U.S. Survey Feet.  
 Vertical Datum:  
 Soundings are shown in feet and indicate depths below Mean Lower Low Water, 1983-2001. MLLW is 0.92 feet below the North American Vertical Datum (NAVD 88) at Reedsport.  
 River mileage conforms to the River Mile Index of the Hydrology and Hydraulics Committee, Pacific Northwest River Basins Commission, June 1968.

**LEGEND**


**THE EXISTING PROJECT**  
 The existing project provides for an entrance channel 26 feet deep and of suitable width across the outer bar, thence a channel 22 feet deep and 200 feet wide from the entrance to a turning basin 22 feet deep, 600 feet wide, and 1000 feet long at Reedsport.  
 Also provides for a side channel 22 feet deep and 200 feet wide from the main channel at river mile 8 to a turning basin 22 feet deep, 500 feet wide, and 800 feet long at Gardiner.

The information depicted on this map represents the results of a survey conducted on the date indicated and can only be considered to represent the general channel conditions existing at that time and is in support of channel maintenance only.  
 \*\* Shoaltest Sounding per Quarter per Reach  
 STAFF GAGE AT REEDSPORT: Northing: 763632 Easting: 3970564  
 STAFF GAGE AT BOAT RAMP: Northing: 763241 Easting: 3971023  
 CONDITION  PREDREDGE  POSTDREDGE

**UMPUQA RIVER, OREGON**  
**REEDSPORT REACH**  
 10 December 2024  
 SCALE IN FEET  
 0 300 600 900 1,200 1,500  
 SUBMITTED: \_\_\_\_\_ APPROVED: \_\_\_\_\_  
 RECOMMENDED: \_\_\_\_\_ CHIEF, WATERWAYS MAINTENANCE SECTION  
 CHIEF, SURVEY SECTION \_\_\_\_\_ SURVEYED: \_\_\_\_\_ PLOTTED: \_\_\_\_\_ CHECKED: \_\_\_\_\_  
 UM\_06\_UM6\_20241210\_CS  
 3,969,000 760,000 3,969,000 760,000