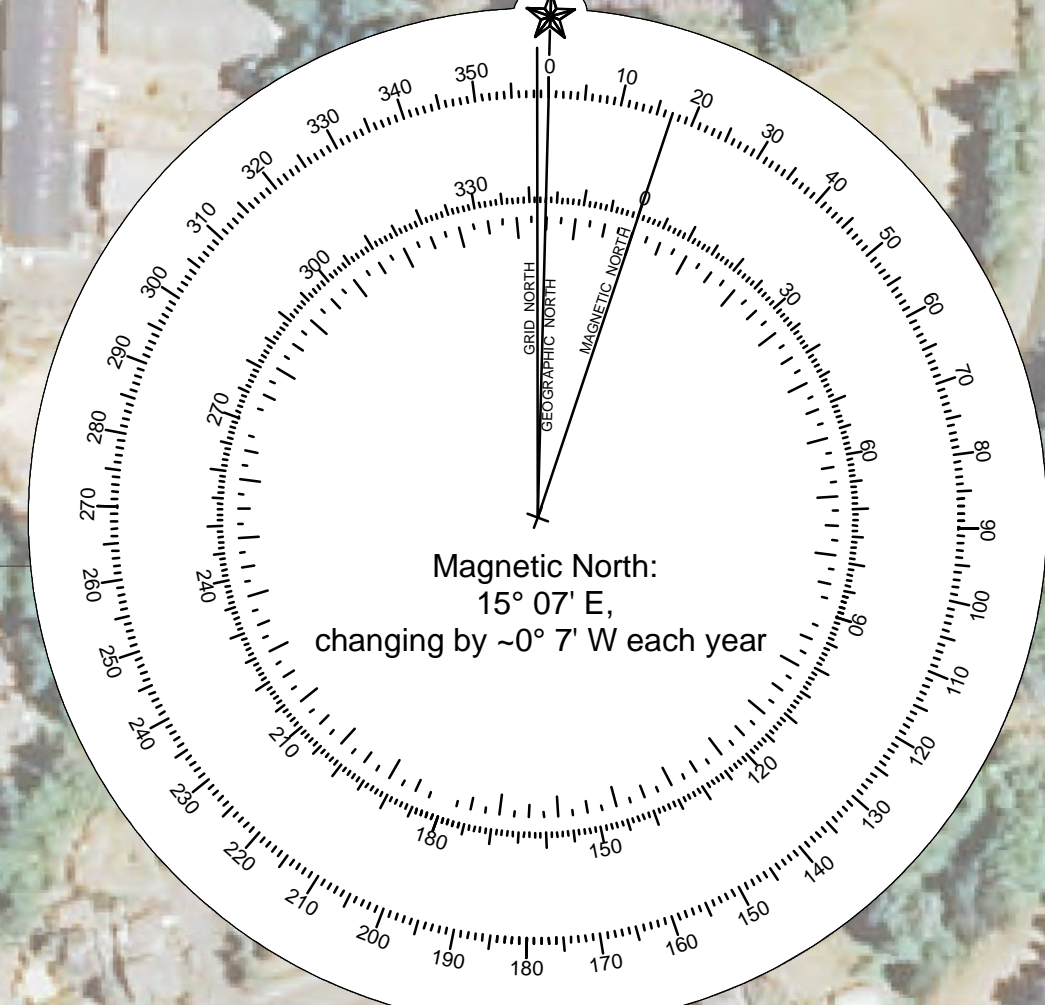
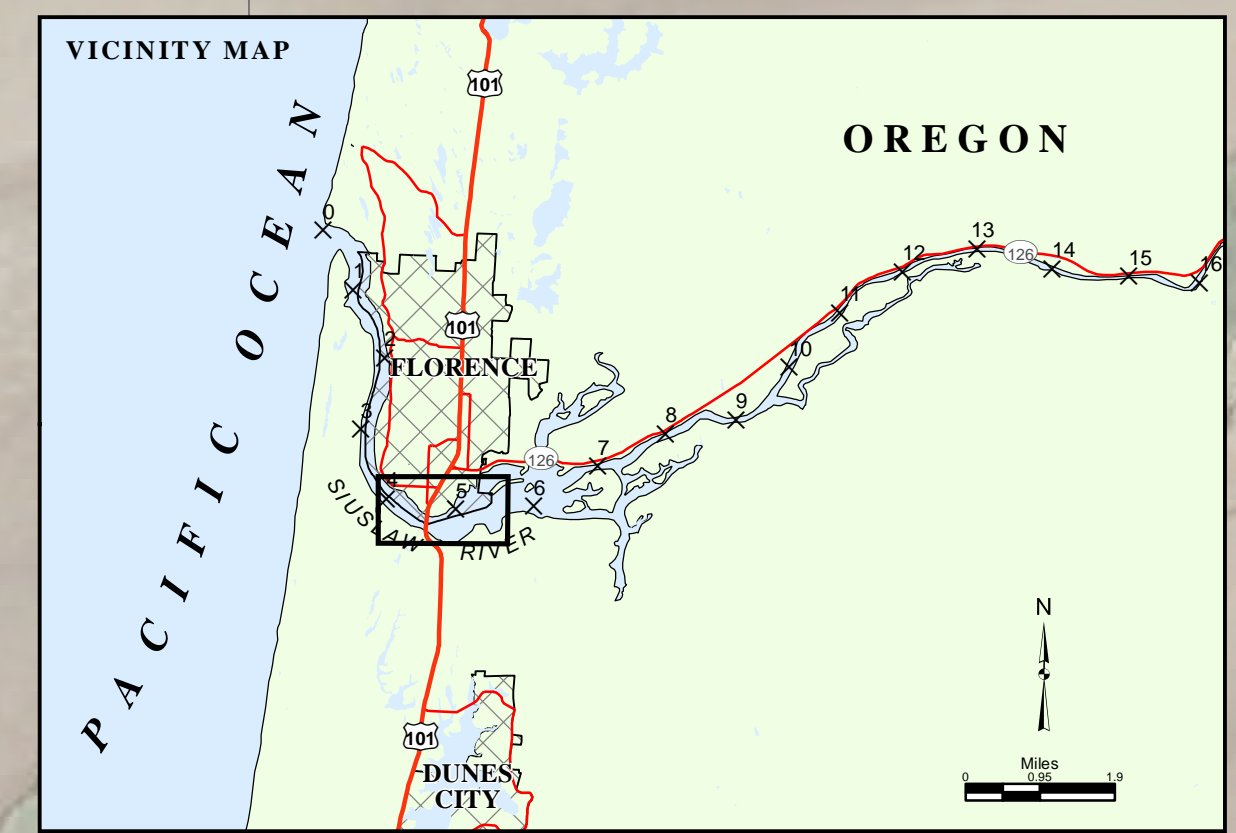
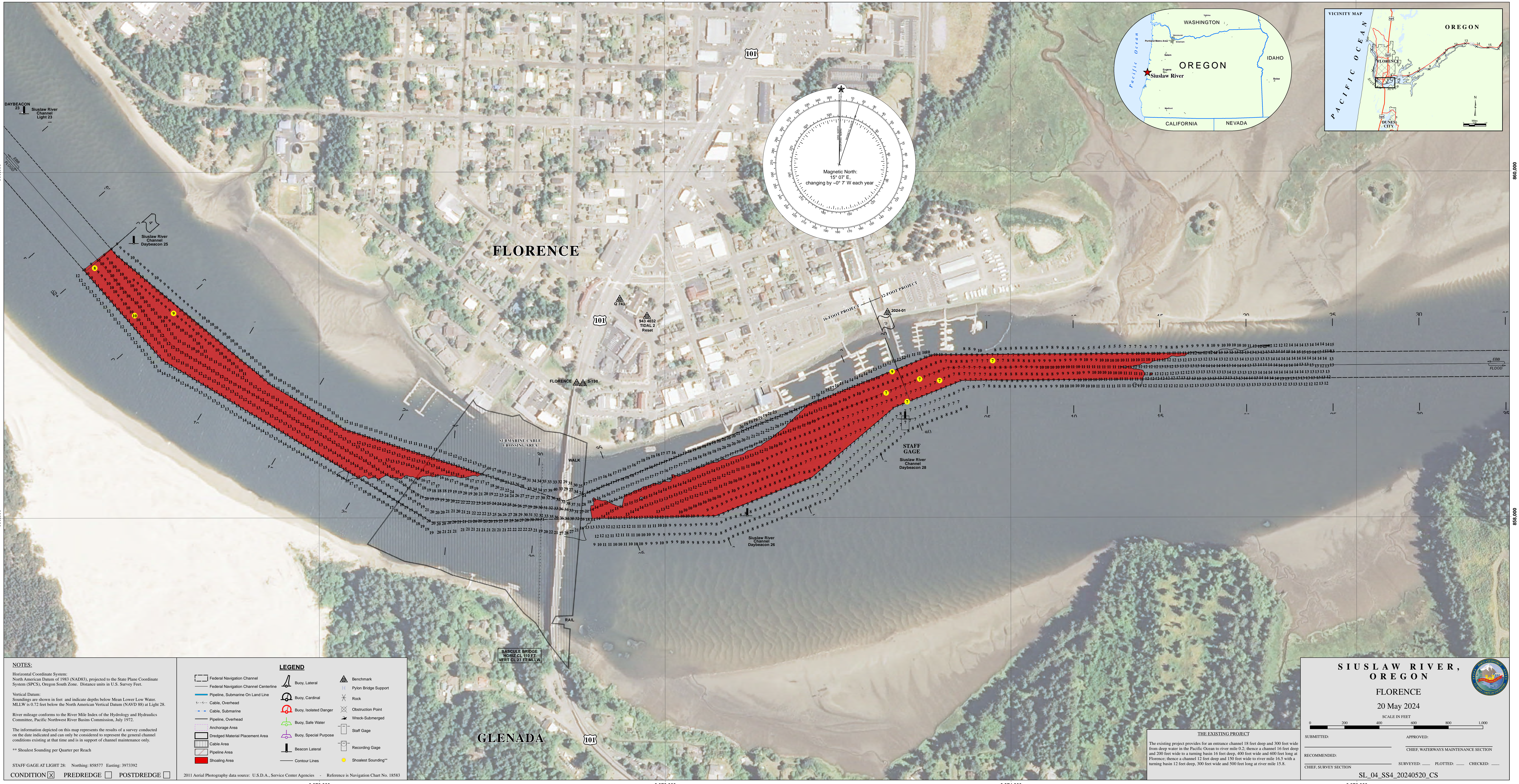


3,970,000

3,972,000

3,974,000

3,976,000



**NOTES:**

Horizontal Coordinate System:  
North American Datum of 1983 (NAD83), projected to the State Plane Coordinate System (SPCS), Oregon South Zone. Distance units in U.S. Survey Feet.

Vertical Datum:  
Soundings are shown in feet and indicate depths below Mean Lower Low Water. MLLW is 0.72 feet below the North American Vertical Datum (NAVD 88) at Light 28.

River mileage conforms to the River Mile Index of the Hydrology and Hydraulics Committee, Pacific Northwest River Basin Commission, July 1972.

The information depicted on this map represents the results of a survey conducted on the date indicated and can only be considered to represent the general channel conditions existing at that time and is in support of channel maintenance only.

\*\* Shoalest Sounding per Quarter per Reach

STAFF GAGE AT LIGHT 28: Northing: 858577 Easting: 3973392

CONDITION  PREDREDGE  POSTDREDGE

LEGEND	
	Federal Navigation Channel
	Federal Navigation Channel Centerline
	Pipeline, Submarine On Land Line
	Cable, Overhead
	Cable, Submarine
	Pipeline, Overhead
	Anchorage Area
	Dredged Material Placement Area
	Cable Area
	Pipeline Area
	Shoaling Area
	Buoy, Lateral
	Buoy, Cardinal
	Buoy, Isolated Danger
	Buoy, Safe Water
	Buoy, Special Purpose
	Beacon Lateral
	Contour Lines
	Benchmark
	Pylon Bridge Support
	Rock
	Obstruction Point
	Wreck-Submerged
	Staff Gage
	Recording Gage
	Shoalest Sounding**

2011 Aerial Photography data source: U.S.D.A., Service Center Agencies Reference is Navigation Chart No. 18583

**SIUSLAW RIVER, OREGON**

**FLORENCE**

20 May 2024

SCALE IN FEET

0 200 400 600 800 1000

THE EXISTING PROJECT

The existing project provides for an entrance channel 18 feet deep and 300 feet wide from deep water in the Pacific Ocean to river mile 0.2; thence a channel 16 feet deep and 200 feet wide to a turning basin 16 feet deep, 400 feet wide and 600 feet long at Florence; thence a channel 12 feet deep and 150 feet wide to river mile 16.5 with a turning basin 12 feet deep, 300 feet wide and 500 feet long at river mile 15.8.

SUBMITTED: \_\_\_\_\_ APPROVED: \_\_\_\_\_  
 RECOMMENDED: \_\_\_\_\_ CHIEF, WATERWAYS MAINTENANCE SECTION  
 CHIEF, SURVEY SECTION SURVEYED: \_\_\_\_\_ PLOTTED: \_\_\_\_\_ CHECKED: \_\_\_\_\_

SL\_04\_SS4\_20240520\_CS