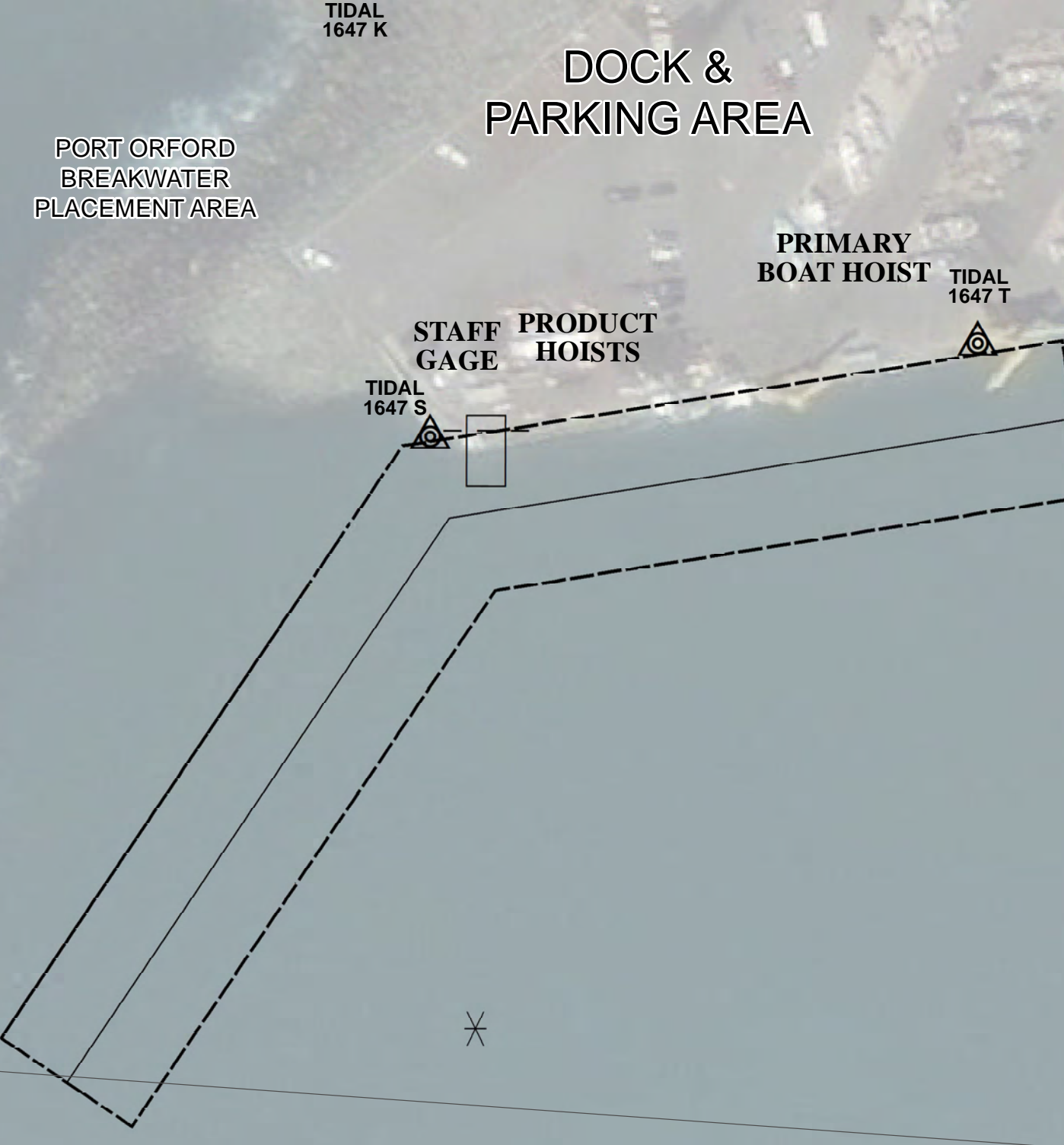


Table of soundings (depths) in feet, organized in a grid format across the map area.

PACIFIC OCEAN

PORT ORFORD NEARSHORE SITE PLACEMENT AREA



PORT ORFORD

NOTES:

Horizontal Coordinate System: North American Datum of 1983 (NAD83), projected to the State Plane Coordinate System (SPCS), Oregon South Zone. Distance units in U.S. Survey Feet. Vertical Datum: Soundings are shown in feet and indicate depths below Mean Lower Low Water 1983-2001. MLLW is 0.49 feet below the North American Vertical Datum (NAVD 88). River mileage conforms to the River Mile Index of the Hydrology and Hydraulics Committee, Pacific Northwest River Basins Commission, June 1968. The information depicted on this map represents the results of a survey conducted on the date indicated and can only be considered to represent the general channel conditions existing at that time and is in support of channel maintenance only. \*\* Shoalest Sounding per Quarter per Reach STAFF GAGE: Northing: 416426 Easting: 3847615

LEGEND: Symbols for Federal Navigation Channel, Pipeline, Cable, Buoy, Beacon, and other navigational features.

THE EXISTING PROJECT: Description of the 16-foot deep, 90-foot wide turning basin. PORT ORFORD, OREGON & NEARSHORE DISPOSAL 02 August 2024. Includes scale bar and submission information.

3,849,000

3,849,000