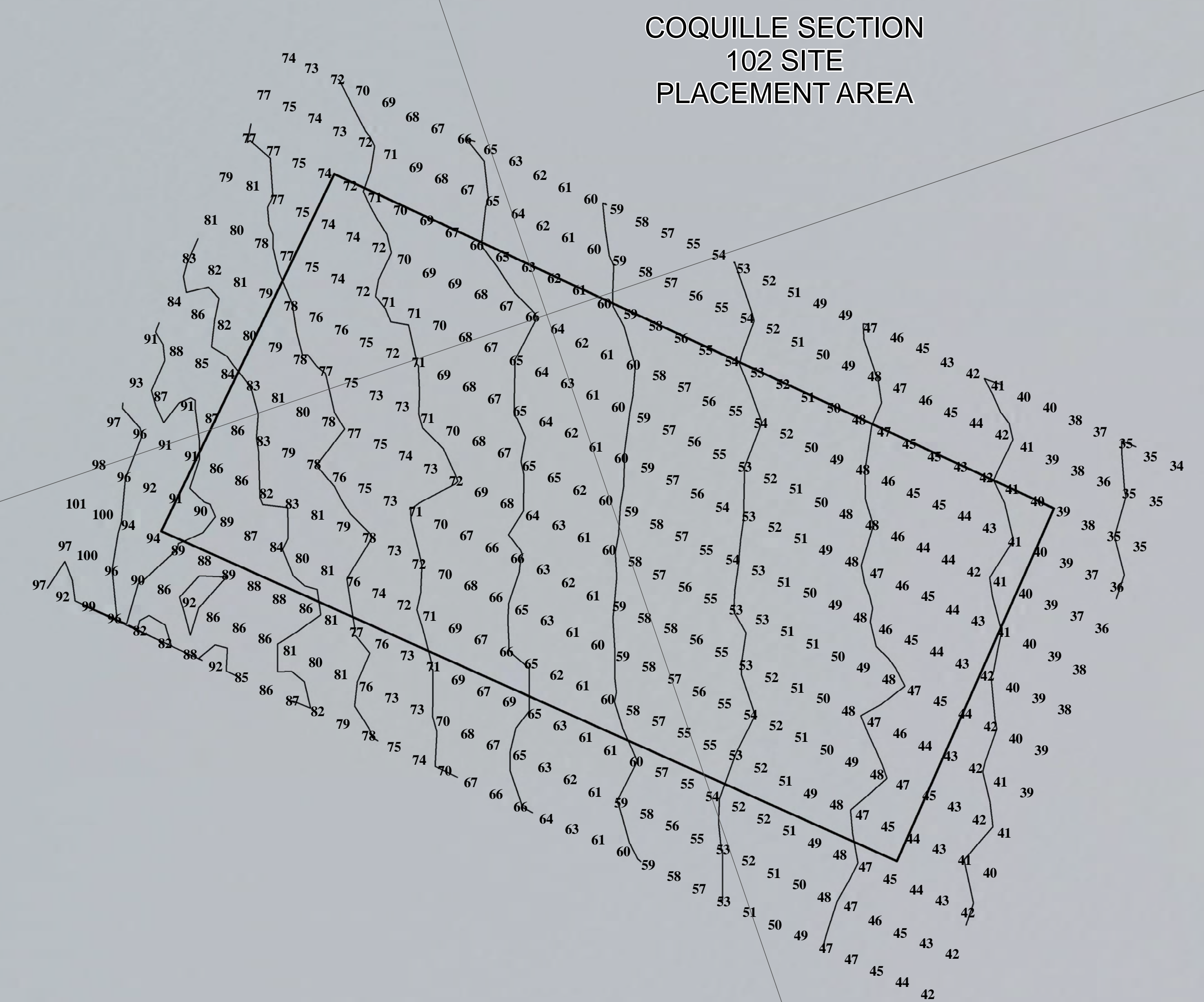


COQUILLE SECTION  
102 SITE  
PLACEMENT AREA



P A C I F I C

O C E A N

Coquille River  
Entrance Lighted  
Whistle Buoy 2

Coquille River  
Entrance Lighted  
Buoy 4

Coquille River  
South Jetty  
Light 8

COQUILLE RIVER

Coquille River  
Rock Buoy 11

Coquille River  
Dike Buoy 13

Coquille River  
Buoy 15

BANDON

**NOTES:**  
Horizontal Coordinate System:  
North American Datum of 1983 (NAD83), projected to the State Plane Coordinate System (SPCS), Oregon South Zone. Distance units in U.S. Survey Feet.  
Vertical Datum:  
Soundings are shown in feet and indicate depths below Mean Lower Low Water 1983-2001. MLLW is 0.11 feet below the North American Vertical Datum (NAVD 88).  
River mileage conforms to the River Mile Index of the Hydrology and Hydraulics Committee, Pacific Northwest River Basins Commission, June 1968.  
The information depicted on this map represents the results of a survey conducted on the date indicated and can only be considered to represent the general channel conditions existing at that time and is in support of channel maintenance only.  
\*\* Shoalest Sounding per Quarter per Reach  
STAFF GAGE AT BOAT RAMP (USACE): Northing: 554230 Easting: 3876597

CONDITION  PREDREDGE  POSTDREDGE

**LEGEND**

|  |                                       |  |                       |  |                      |
|--|---------------------------------------|--|-----------------------|--|----------------------|
|  | Federal Navigation Channel            |  | Buoy, Lateral         |  | Benchmark            |
|  | Federal Navigation Channel Centerline |  | Buoy, Cardinal        |  | Pylon Bridge Support |
|  | Pipeline, Submarine On Land Line      |  | Buoy, Isolated Danger |  | Obstruction Point    |
|  | Cable, Overhead                       |  | Buoy, Safe Water      |  | Wreck-Submerged      |
|  | Cable, Submarine                      |  | Buoy, Special Purpose |  | Staff Gage           |
|  | Pipeline, Overhead                    |  | Beacon, General       |  | Recording Gage       |
|  | Anchorage Area                        |  | Contour Lines         |  | Shoalest Sounding**  |
|  | Dredged Material Placement Area       |  |                       |  |                      |
|  | Cable Area                            |  |                       |  |                      |
|  | Pipeline Area                         |  |                       |  |                      |
|  | Shoaling Area                         |  |                       |  |                      |

2010 Aerial Photography data source: ESRI, USDA, NASA, i-cubed - Reference is Navigation Chart No. 18588

**COQUILLE RIVER, OREGON**

**DISPOSAL**

23 May 2024

SCALE IN FEET  
0 500 1,000 1,500 2,000 2,500

SUBMITTED: \_\_\_\_\_ APPROVED: \_\_\_\_\_  
CHIEF, WATERWAYS MAINTENANCE SECTION

RECOMMENDED: \_\_\_\_\_ SURVEYED: \_\_\_\_\_ PLOTTED: \_\_\_\_\_ CHECKED: \_\_\_\_\_  
CHIEF, SURVEY SECTION

CQ\_00\_CQD\_20240523\_PA

3,874,000