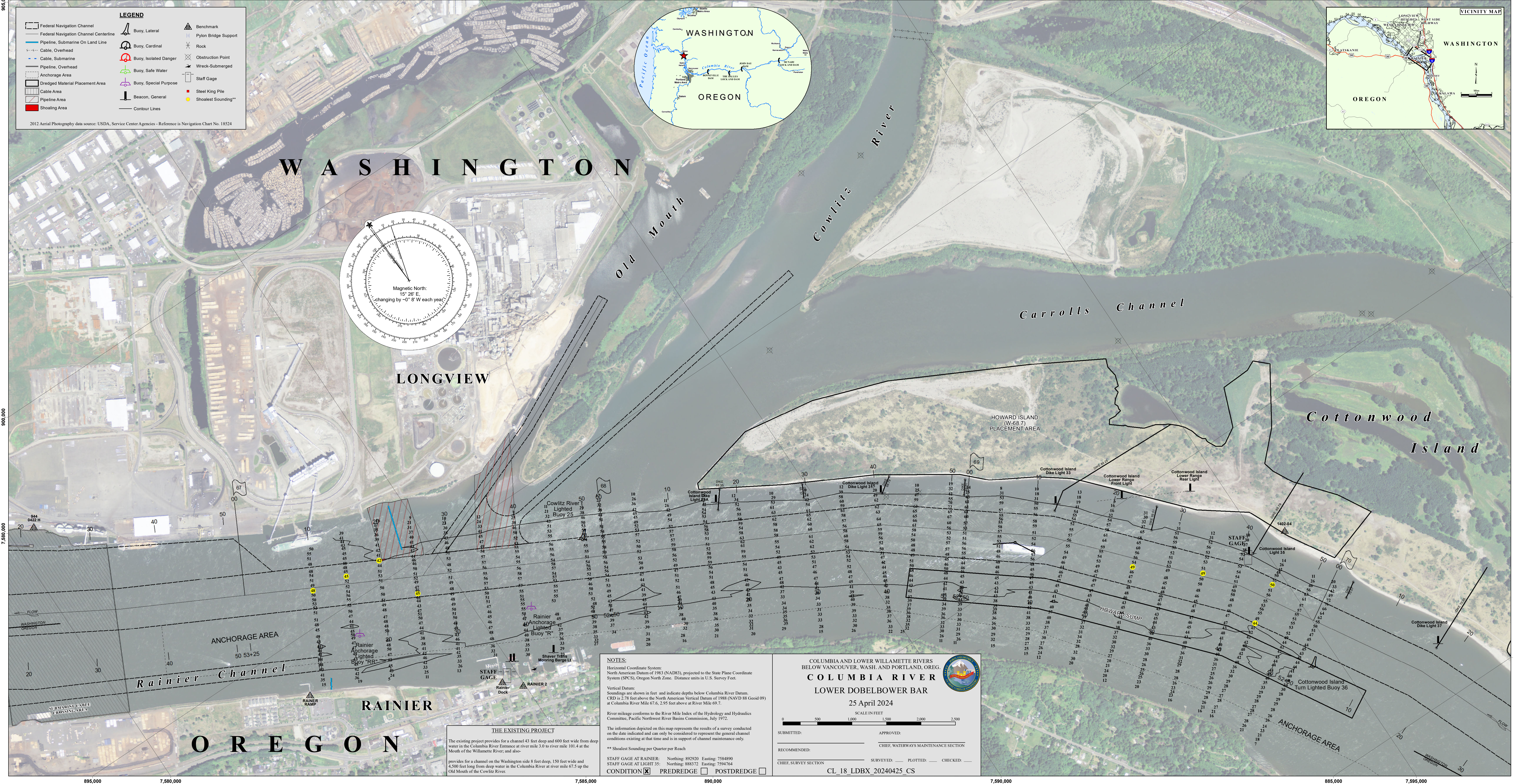
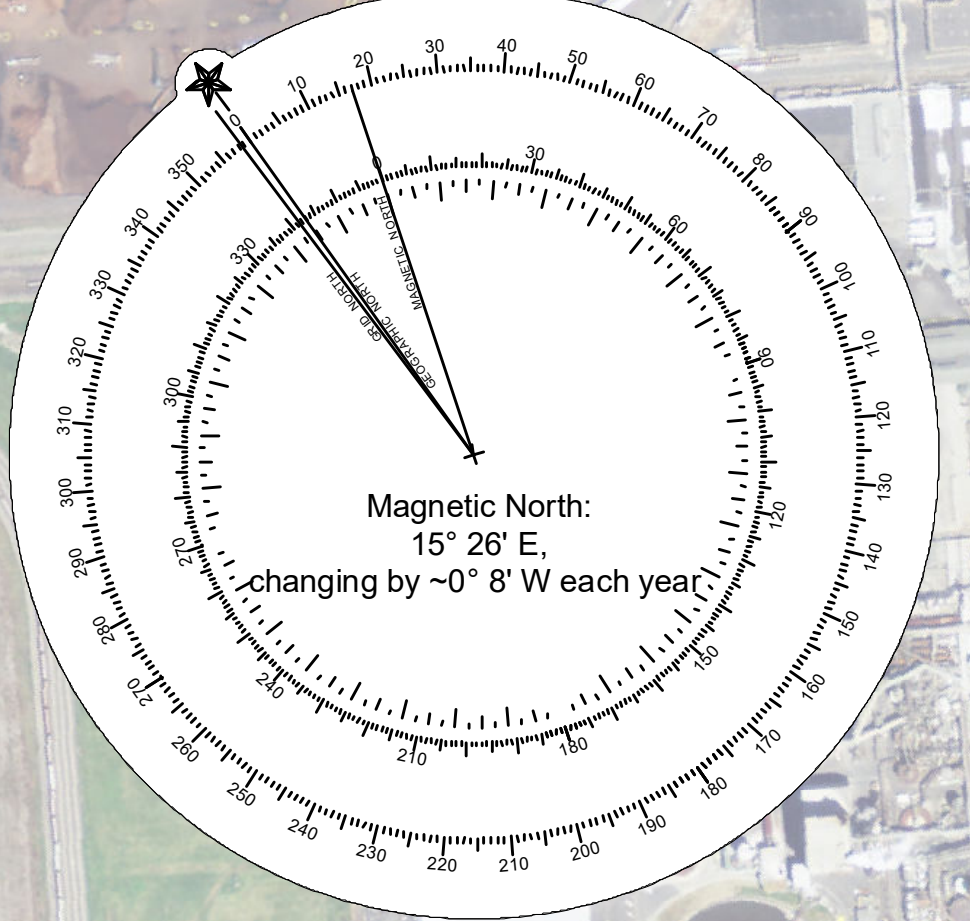


LEGEND

- Federal Navigation Channel
- Federal Navigation Channel Centerline
- Pipeline, Submarine On Land Line
- Cable, Overhead
- Cable, Submarine
- Pipeline, Overhead
- Anchorage Area
- Dredged Material Placement Area
- Cable Area
- Pipeline Area
- Shoaling Area
- Buoy, Lateral
- Buoy, Cardinal
- Buoy, Isolated Danger
- Buoy, Safe Water
- Buoy, Special Purpose
- Beacon, General
- Benchmark
- Pylon Bridge Support
- Rock
- Obstruction Point
- Wreck-Submerged
- Staff Gage
- Steel King Pile
- Shoalest Sounding**
- Contour Lines

2012 Aerial Photography data source: USDA, Service Center Agencies - Reference is Navigation Chart No. 18524



NOTES:
 Horizontal Coordinate System:
 North American Datum of 1983 (NAD83), projected to the State Plane Coordinate System (SPCS), Oregon North Zone. Distance units in U.S. Survey Feet.
 Vertical Datum:
 Soundings are shown in feet and indicate depths below Columbia River Datum. CRD is 2.78 feet above the North American Vertical Datum of 1988 (NAVD 88 Geoid 09) at Columbia River Mile 67.6, 2.95 feet above at River Mile 69.7.
 River mileage conforms to the River Mile Index of the Hydrology and Hydraulics Committee, Pacific Northwest River Basins Commission, July 1972.
 The information depicted on this map represents the results of a survey conducted on the date indicated and can only be considered to represent the general channel conditions existing at that time and is in support of channel maintenance only.
 ** Shoalest Sounding per Quarter per Reach

COLUMBIA AND LOWER WILLAMETTE RIVERS
 BELOW VANCOUVER, WASH. AND PORTLAND, OREG.
COLUMBIA RIVER
 LOWER DOBELBOWER BAR
 25 April 2024
 SCALE IN FEET
 0 500 1,000 1,500 2,000 2,500

THE EXISTING PROJECT
 The existing project provides for a channel 43 feet deep and 600 feet wide from deep water in the Columbia River Entrance at river mile 3.0 to river mile 101.4 at the Mouth of the Willamette River, and also provides for a channel on the Washington side 8 feet deep, 150 feet wide and 4,500 feet long from deep water in the Columbia River at river mile 67.5 up the Old Mouth of the Cowlitz River.

STAFF GAGE AT RAINIER: Northing: 892920 Easting: 758490
 STAFF GAGE AT LIGHT 35: Northing: 888372 Easting: 7594764
 CONDITION PREDREDGE POSTDREDGE

SUBMITTED: _____ APPROVED: _____
 RECOMMENDED: _____ STAFF, WATERWAYS MAINTENANCE SECTION
 CHIEF, SURVEY SECTION _____ SURVEY: _____ PLOTTED: _____ CHECKED: _____
 CL_18_LDBX_20240425_CS