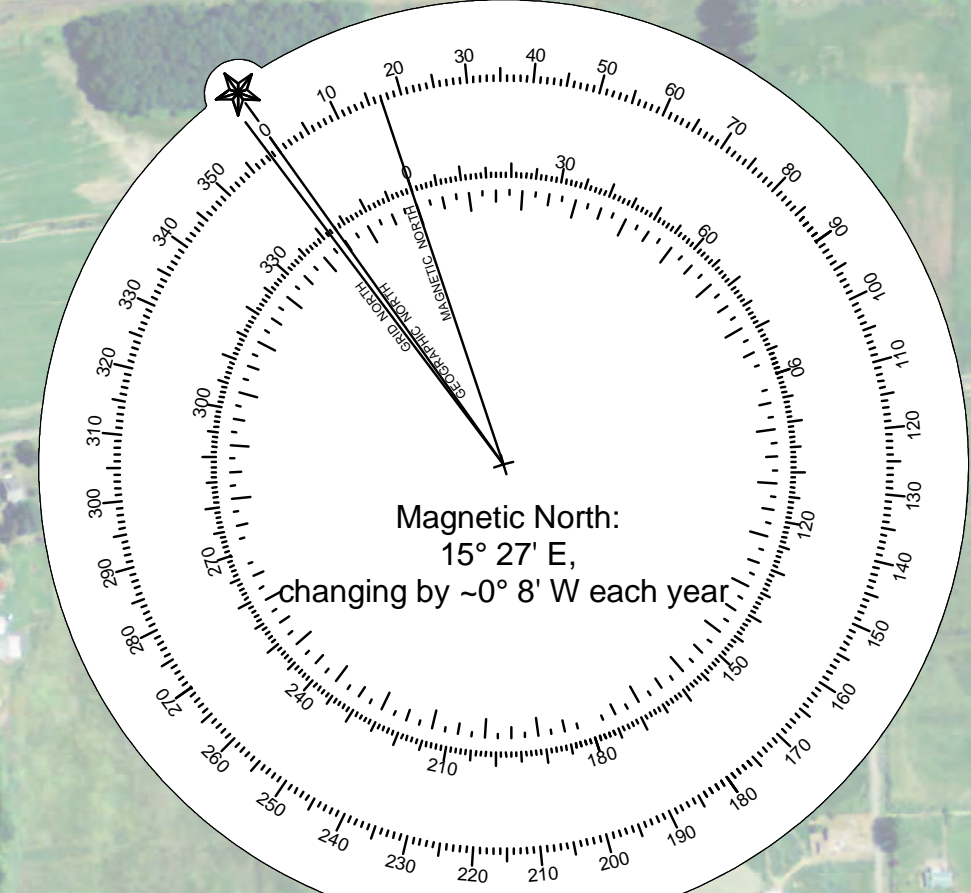
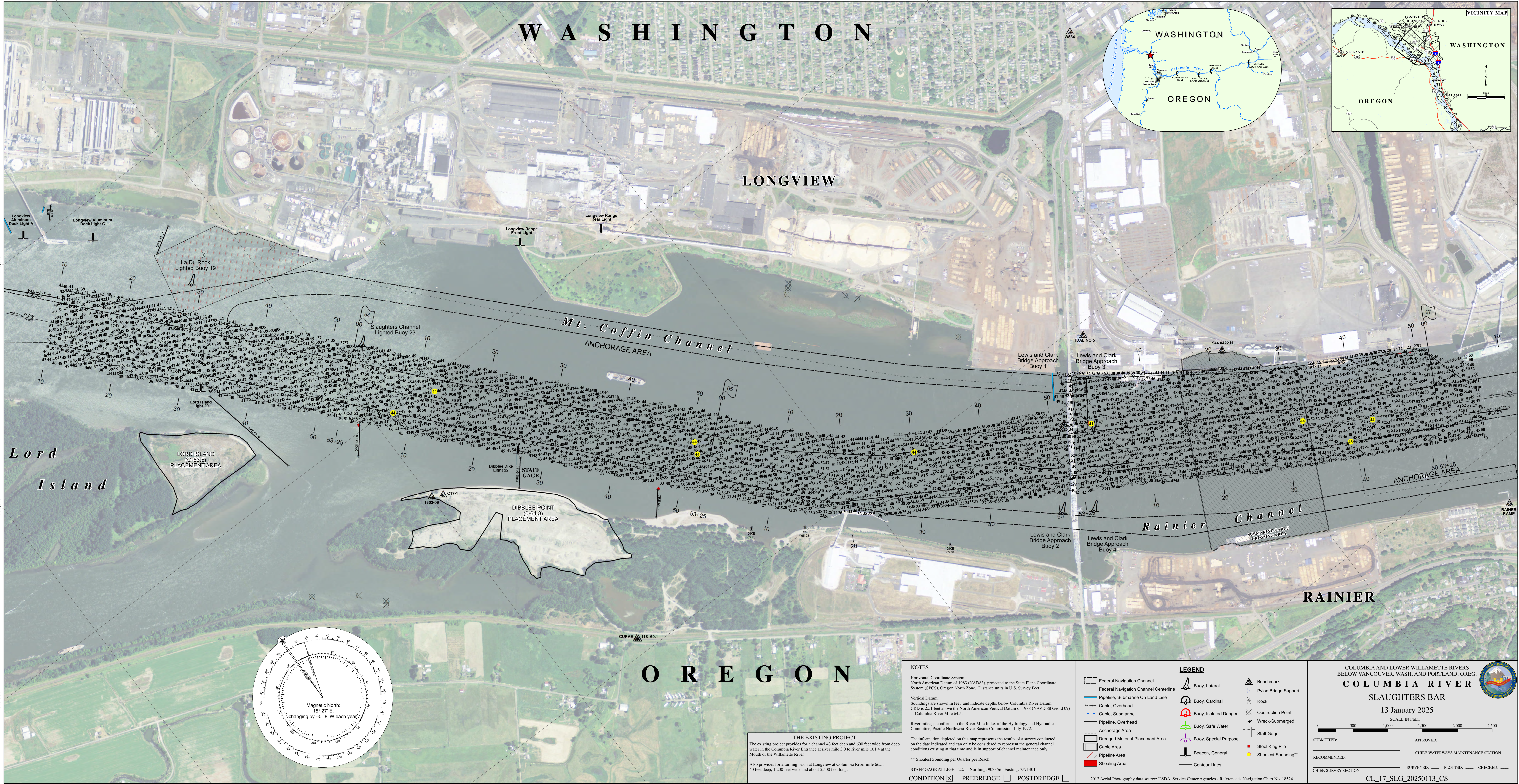


WASHINGTON

LONGVIEW

OREGON



NOTES:

Horizontal Coordinate System:
North American Datum of 1983 (NAD83), projected to the State Plane Coordinate System (SPCS), Oregon North Zone. Distance units in U.S. Survey Feet.

Vertical Datum:
Soundings are shown in feet and indicate depths below Columbia River Datum. CRD is 2.51 feet above the North American Vertical Datum of 1988 (NAVD 88 Geoid 09) at Columbia River Mile 64.5.

River mileage conforms to the River Mile Index of the Hydrology and Hydraulics Committee, Pacific Northwest River Basins Commission, July 1972.

CONDITION PREDREDGE POSTREDGE

STAFF GAGE AT LIGHT 22: Northing: 903356 Easting: 7511401

** Shoaltest Sounding per Quarter per Reach

2012 Aerial Photography data source: USDA, Service Center Agencies - Reference is Navigation Chart No. 18524

LEGEND

- Federal Navigation Channel
- Federal Navigation Channel Centerline
- Pipeline, Submarine On Land Line
- Cable, Overhead
- Cable, Submarine
- Pipeline, Overhead
- Anchorage Area
- Dredged Material Placement Area
- Cable Area
- Pipeline Area
- Shoaling Area
- Buoy, Lateral
- Buoy, Cardinal
- Buoy, Isolated Danger
- Buoy, Safe Water
- Buoy, Special Purpose
- Beacon, General
- Contour Lines
- Benchmark
- Pylon Bridge Support
- Rock
- Obstruction Point
- Wreck-Submerged
- Staff Gage
- Steel King Pile
- Shoaltest Sounding**

COLUMBIA AND LOWER WILLAMETTE RIVERS
BELOW VANCOUVER, WASH. AND PORTLAND, OREG.

COLUMBIA RIVER

SLAUGHTERS BAR

13 January 2025

SCALE IN FEET
0 500 1,000 1,500 2,000 2,500

SUBMITTED: _____ APPROVED: _____
RECOMMENDED: _____ CHIEF, WATERWAYS MAINTENANCE SECTION
CHIEF, SURVEY SECTION _____ SURVEYED: _____ PLOTTED: _____ CHECKED: _____

CL_17_SLG_20250113_CS

THE EXISTING PROJECT
The existing project provides for a channel 43 feet deep and 600 feet wide from deep water in the Columbia River Entrance at river mile 3.0 to river mile 101.4 at the Mouth of the Willamette River.

Also provides for a turning basin at Longview at Columbia River mile 66.5, 40 feet deep, 1,200 feet wide and about 5,500 feet long.