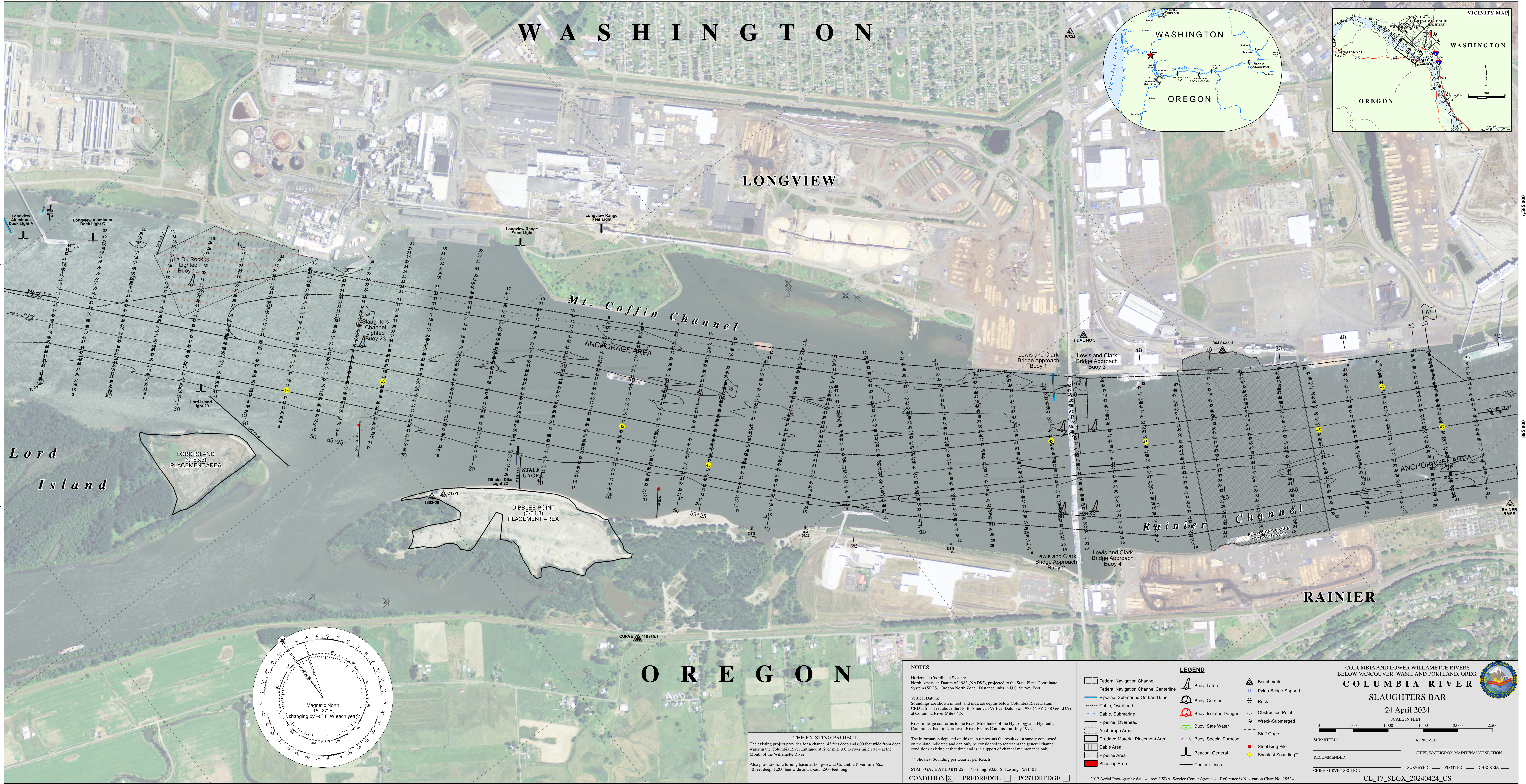


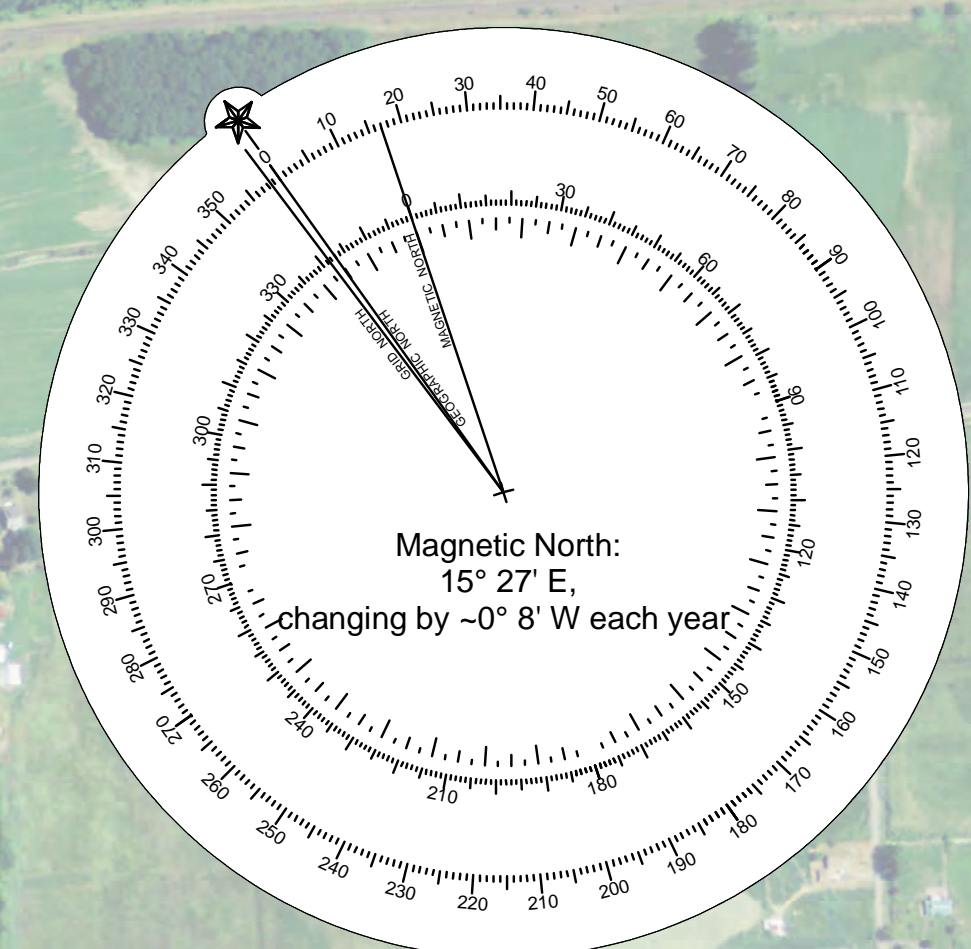
WASHINGTON

LONGVIEW



Lord Island
LORD ISLAND
(0-53.5)
PLACEMENT AREA

DIBBLEE POINT
(0-64.8)
PLACEMENT AREA



OREGON

NOTES:

Horizontal Coordinate System:
North American Datum of 1983 (NAD83), projected to the State Plane Coordinate System (SPCS), Oregon North Zone. Distance units in U.S. Survey Feet.

Vertical Datum:
Soundings are shown in feet and indicate depths below Columbia River Datum. CRD is 2.51 feet above the North American Vertical Datum of 1988 (NAVD 88 Geoid 09) at Columbia River Mile 64.5.

River mileage conforms to the River Mile Index of the Hydrology and Hydraulics Committee, Pacific Northwest River Basins Commission, July 1972.

THE EXISTING PROJECT
The existing project provides for a channel 43 feet deep and 600 feet wide from deep water in the Columbia River Entrance at river mile 3.0 to river mile 101.4 at the Mouth of the Willamette River.

Also provides for a turning basin at Longview at Columbia River mile 66.5, 40 feet deep, 1,200 feet wide and about 5,500 feet long.

Staff Gage at Light 22: Northing: 903356 Easting: 7571401

CONDITION PREDREDGE POSTDREDGE

LEGEND	
	Federal Navigation Channel
	Federal Navigation Channel Centerline
	Pipeline, Submarine on Land Line
	Cable, Overhead
	Cable, Submarine
	Pipeline, Overhead
	Anchorage Area
	Dredged Material Placement Area
	Cable Area
	Pipeline Area
	Shoaling Area
	Buoy, Lateral
	Buoy, Cardinal
	Buoy, Isolated Danger
	Buoy, Safe Water
	Buoy, Special Purpose
	Beacon, General
	Contour Lines
	Benchmark
	Pylon Bridge Support
	Rock
	Obstruction Point
	Wreck-Submerged
	Staff Gage
	Steel King Pile
	Shoalest Sounding**

COLUMBIA AND LOWER WILLAMETTE RIVERS
BELOW VANCOUVER, WASH. AND PORTLAND, OREG.

COLUMBIA RIVER

SLAUGHTERS BAR

24 April 2024
SCALE IN FEET

SUBMITTED: _____ APPROVED: _____
RECOMMENDED: _____ CHIEF, WATERWAYS MAINTENANCE SECTION
CHIEF, SURVEY SECTION _____ SURVEYED: _____ PLOTTED: _____ CHECKED: _____

CL_17_SLGX_20240424_CS