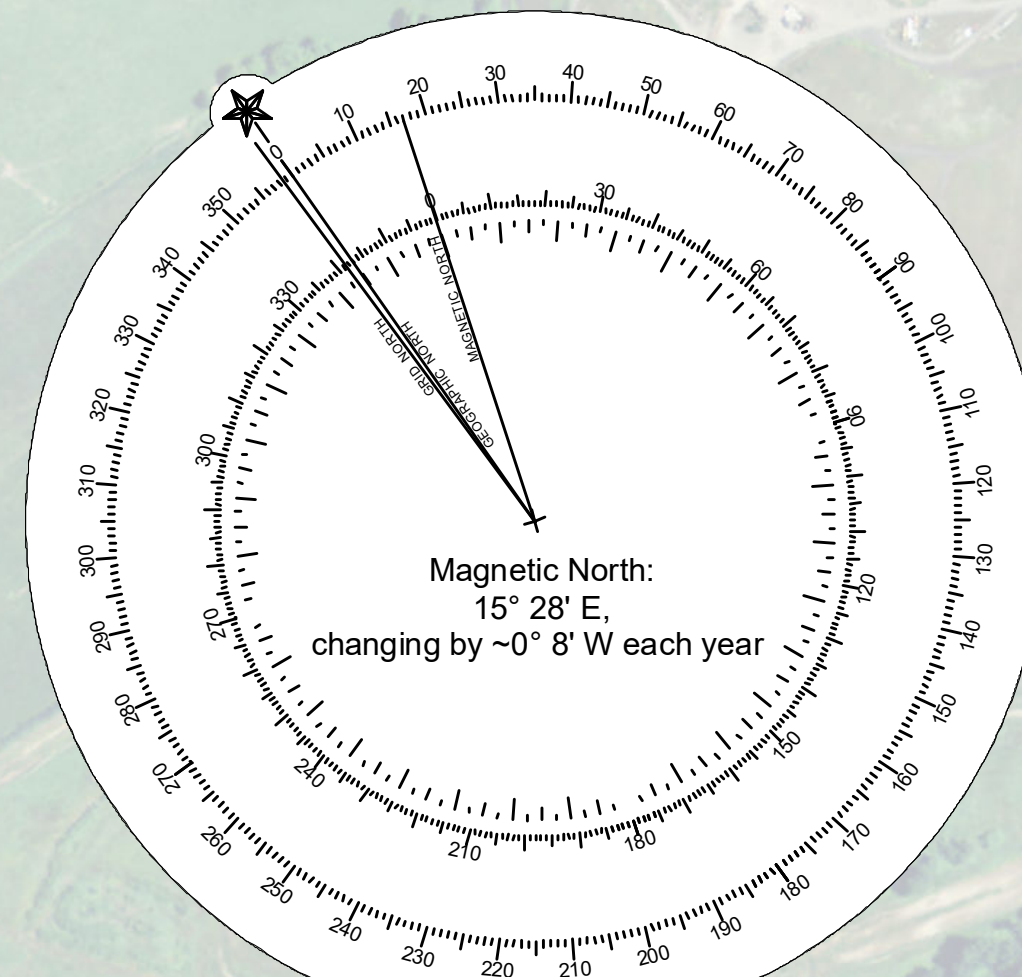




WASHINGTON

OREGON



NOTES:

Horizontal Coordinate System:
North American Datum of 1983 (NAD83), projected to the State Plane Coordinate System (SPCS), Oregon North Zone. Distance units in U.S. Survey Feet.

Vertical Datum:
Soundings are shown in feet and indicate depths below Columbia River Datum. CRD is 2.32 feet above the North American Vertical Datum of 1988 (NAVD 88 Geoid 09) at Columbia River Mile 61.7.

River mileage conforms to the River Mile Index of the Hydrology and Hydraulics Committee, Pacific Northwest River Basin Commission, July 1972.

The information depicted on this map represents the results of a survey conducted on the date indicated and can only be considered to represent the general channel conditions existing at that time and is in support of channel maintenance only.

** Shoalest Sounding per Quarter per Reach

STAFF GAGE AT LIGHT 13: Northing: 913405 Easting: 7560745

CONDITION PREDREDGE POSTDREDGE

LEGEND

- Federal Navigation Channel
- Federal Navigation Channel Centerline
- Pipeline, Submarine On Land Line
- Cable, Overhead
- Cable, Submarine
- Pipeline, Overhead
- Anchorage Area
- Dredged Material Placement Area
- Cable Area
- Pipeline Area
- Shoaling Area
- Buoy, Lateral
- Buoy, Cardinal
- Buoy, Isolated Danger
- Buoy, Safe Water
- Buoy, Special Purpose
- Beacon, General
- Contour Lines
- Benchmark
- Pylon Bridge Support
- Rock
- Obstruction Point
- Wreck-Submerged
- Staff Gage
- Steel King Pile
- Shoalest Sounding**

THE EXISTING PROJECT
The existing project provides for a channel 43 feet deep and 600 feet wide from deep water in the Columbia River Entrance at river mile 3.0 to river mile 101.4 at the Mouth of the Willamette River.

COLUMBIA AND LOWER WILLAMETTE RIVERS
BELOW VANCOUVER, WASH. AND PORTLAND, OREG.
COLUMBIA RIVER
WALKER ISLAND REACH

21 March 2024

SCALE IN FEET
0 500 1,000 1,500 2,000 2,500

SUBMITTED: _____ APPROVED: _____
RECOMMENDED: _____ CHIEF, WATERWAYS MAINTENANCE SECTION
CHIEF, SURVEY SECTION _____ SURVEYED: _____ PLOTTED: _____ CHECKED: _____

CL 16 WLXX 20240321_CS