

FIXED BRIDGE (MAIN CHANNEL)  
HOR. CL. 1070 FEET  
VERT. CL. 193 FEET MLLW  
VERT. CL. 205 FEET MLLW (AT CENTER)

SUBMARINE CABLE CROSSING AREA

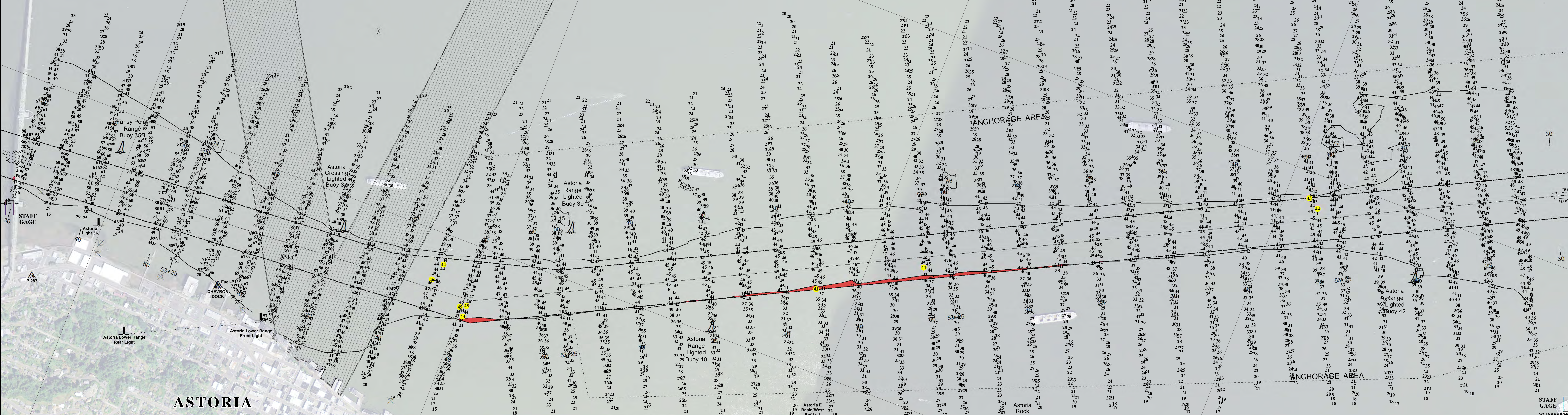
SUBMARINE CABLE CROSSING AREA

ANCHORAGE AREA

ANCHORAGE AREA

ASTORIA

OREGON



**LEGEND**

|  |                                       |  |                       |  |                      |
|--|---------------------------------------|--|-----------------------|--|----------------------|
|  | Federal Navigation Channel            |  | Buoy, Lateral         |  | Benchmark            |
|  | Federal Navigation Channel Centerline |  | Buoy, Cardinal        |  | Pylon Bridge Support |
|  | Pipeline, Submarine On Land Line      |  | Buoy, Isolated Danger |  | Obstruction Point    |
|  | Cable, Overhead                       |  | Buoy, Safe Water      |  | Wreck-Submerged      |
|  | Cable, Submarine                      |  | Buoy, Special Purpose |  | Staff Gage           |
|  | Pipeline, Overhead                    |  | Steel King Pile       |  | Shoaltest Sounding** |
|  | Anchorage Area                        |  | Beacon, General       |  |                      |
|  | Dredged Material Placement Area       |  | Contour Lines         |  |                      |
|  | Cable Area                            |  |                       |  |                      |
|  | Pipeline Area                         |  |                       |  |                      |
|  | Shoaling Area                         |  |                       |  |                      |

**NOTES:**  
Horizontal Coordinate System:  
North American Datum of 1983 (NAD83), projected to the State Plane Coordinate System (SPCS), Oregon North Zone. Distance units in U.S. Survey Feet.  
Vertical Datum:  
Soundings are shown in feet and indicate depths below Mean Lower Low Water. MLLW is 0.26 feet above the North American Vertical Datum (NAVD 88 Geoid 09) at Columbia River Mile 15.9, 0.29 feet below at Columbia River Mile 17.4.  
River mileage conforms to the River Mile Index of the Hydrology and Hydraulics Committee, Pacific Northwest River Basin Commission, July 1972.  
The information depicted on this map represents the results of a survey conducted on the date indicated and can only be considered to represent the general channel conditions existing at that time and is in support of channel maintenance only.  
\*\* Shoaltest Sounding per Quarter per Reach  
STAFF GAGE AT EAST MOORING BASIN: Northing: 939853 Easting: 7366372  
STAFF GAGE AT BRIDGE PIER: Northing: 938345 Easting: 7353764

COLUMBIA AND LOWER WILLAMETTE RIVERS  
BELOW VANCOUVER, WASH. AND PORTLAND, OREG.  
**COLUMBIA RIVER**  
UPPER SANDS  
24 April 2024  
SCALE IN FEET  
0 500 1,000 1,500 2,000 2,500  
SUBMITTED: \_\_\_\_\_ APPROVED: \_\_\_\_\_  
RECOMMENDED: \_\_\_\_\_ CHIEF, WATERWAYS MAINTENANCE SECTION  
CHIEF, SURVEY SECTION \_\_\_\_\_ SURVEYED: \_\_\_\_\_ PLOTTED: \_\_\_\_\_ CHECKED: \_\_\_\_\_  
CONDITION  PREDREDGE  POSTREDGE   
CL\_04\_USNX\_20240424\_CS