

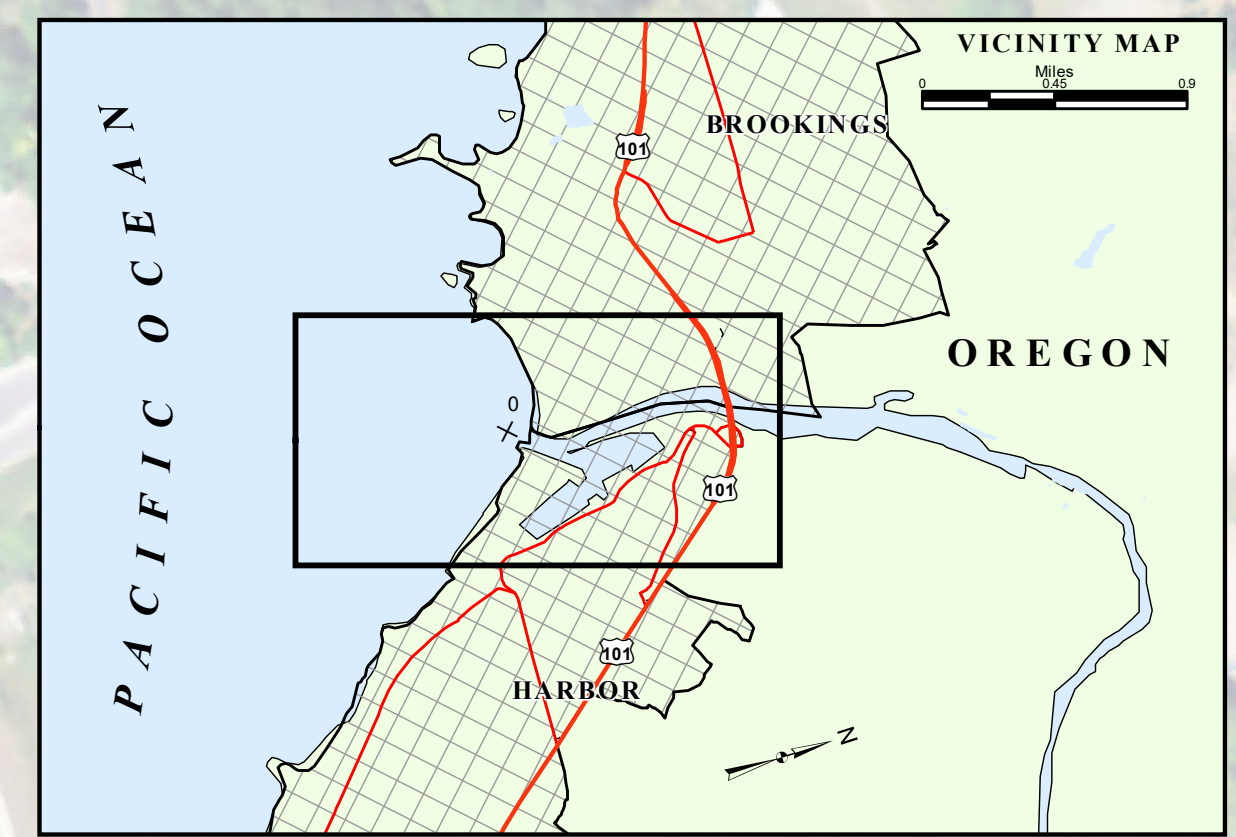
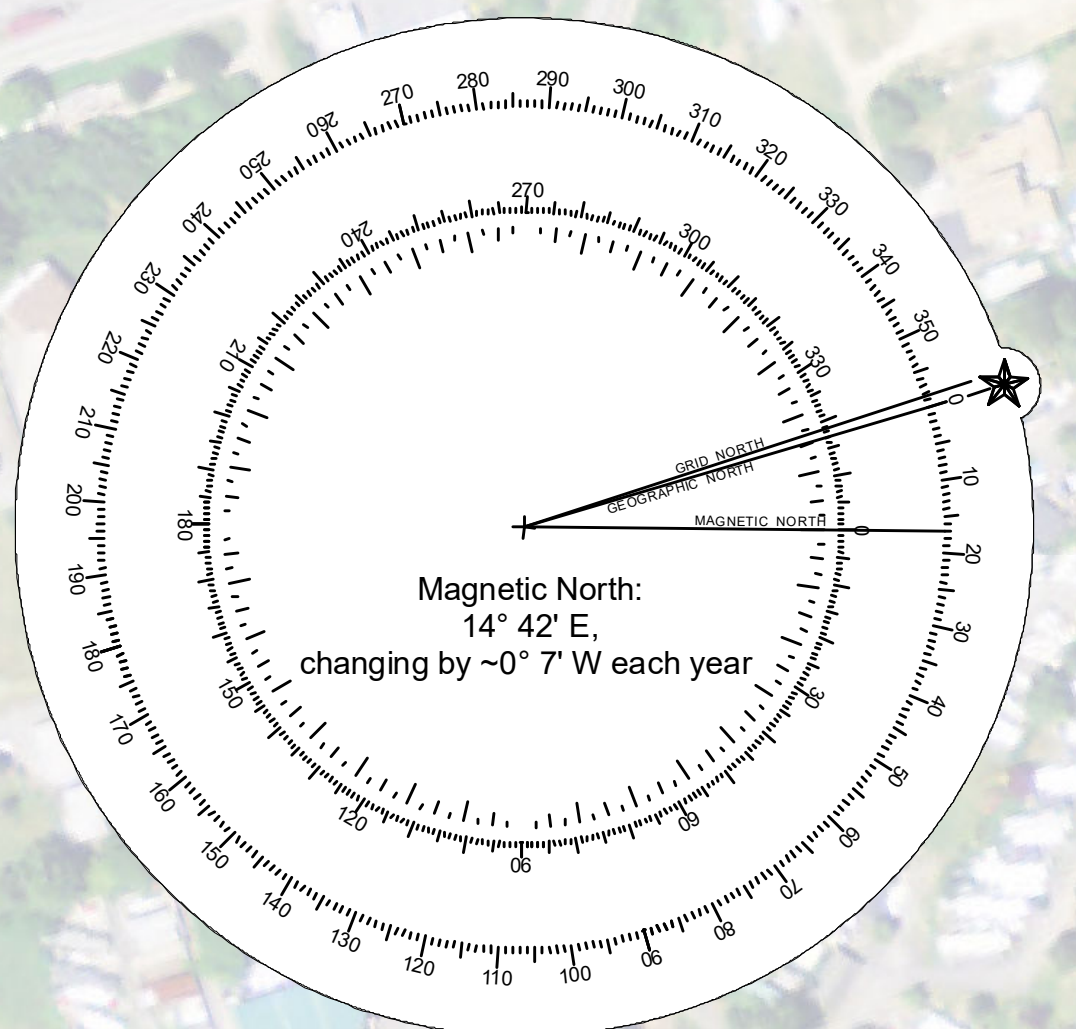
PACIFIC OCEAN

BROOKINGS

Chetco River

HARBOR

CHETCO NEARSHORE PLACEMENT AREA



Chetco River Entrance Lighted Bell Buoy 2

Chetco River Entrance Light 5

Chetco River Entrance Daybeacon 9

Chetco River Entrance Light 11

Chetco River Entrance Range Front Light

Chetco River Entrance Range Rear Light

NOTES:

Horizontal Coordinate System:  
North American Datum of 1983 (NAD83), projected to the State Plane Coordinate System (SPCS), Oregon South Zone. Distance units in U.S. Survey Feet.

Vertical Datum:  
Soundings are shown in feet and indicate depths below Mean Lower Low Water 1983-2001. MLLW is 0.40 feet below the North American Vertical Datum (NAVD 88) at the Coast Guard Dock.

River mileage conforms to the River Mile Index of the Hydrology and Hydraulics Committee, Pacific Northwest River Basin Commission, June 1968.

The information depicted on this map represents the results of a survey conducted on the date indicated and can only be considered to represent the general channel conditions existing at that time and is in support of channel maintenance only.

\*\* Shoalest Sounding per Quarter per Reach

STAFF GAGE AT FUEL DOCK: Northing: 161892. Easting: 3898247

CONDITION  PREDDREDGE  POSTDREDGE

**LEGEND**

	Federal Navigation Channel		Benchmark
	Federal Navigation Channel Centerline		Pylon Bridge Support
	Pipeline, Submarine On Land Line		Rock
	Cable, Overhead		Obstruction Point
	Cable, Submarine		Wreck-Submerged
	Pipeline, Overhead		Staff Gage
	Dredged Material Placement Area		Recording Gage
	Anchorage Area		Shoalest Sounding**
	Cable Area		
	Pipeline Area		
	Shoaling Area		
	Buoy, Lateral		
	Buoy, Cardinal		
	Buoy, Isolated Danger		
	Buoy, Safe Water		
	Buoy, Special Purpose		
	Beacon, General		
	Contour Lines		

**CHETCO RIVER, OREGON BARGE TURNING BASIN**  
11 September 2024

SCALE IN FEET  
0 200 400 600 800 1,000

SUBMITTED: \_\_\_\_\_ APPROVED: \_\_\_\_\_  
CHIEF, WATERWAYS MAINTENANCE SECTION

RECOMMENDED: \_\_\_\_\_ SURVEYED: \_\_\_\_\_ PLOTTED: \_\_\_\_\_ CHECKED: \_\_\_\_\_  
CHIEF, SURVEY SECTION

CH\_01\_CHI\_20240911\_CS  
164,000

**THE EXISTING PROJECT**

The existing project provides for an entrance channel 14 feet deep and 120 feet wide; a barge turning basin 14 feet deep, 250 feet wide and 650 feet long; and a commercial boat access channel 12 feet deep, 200 feet long and 100 feet wide.

